



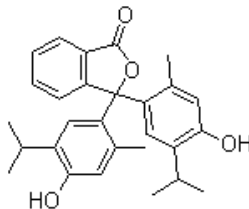
# Specification

16.01.2022

Code No: IS01636

CAS No: 125-20-2

EINECS No.: 204-729-7

Chemical Name: **Thymolphthalein****Structure:**Molecular Formula: **C<sub>28</sub>H<sub>30</sub>O<sub>4</sub>**  
Molecular Weight: **430.54****Product Properties:**

Appearance	White powder
Assay by Spectrophotometry	min 96 %
Solubility 0.1 % (Ethanol)	Clear Solution
Transition Range	pH 9.3 – 10.5 (Colourless - Blue)
Absorptivity 1% /1cm (in 0.1 N NaOH) at max 594.0 nm	1010
Loss on Drying at 110 °C	0.84 %
Transition Range acc. to ACS	Passes test